



Walk to
Emmaus
THE UPPER ROOM®

Minnesota Emmaus Community Organized 1991
February 2009 Newsletter
Website www.mnemmaus.org

FROM THE COMMUNITY LAY DIRECTOR

Dear Brothers and Sisters in Christ,

This will be my inaugural message as Community Lay Director (CLD) for the Minnesota Walk to Emmaus Community.

Throughout my life I have often asked myself the questions, "What am I doing here, and how did I get here." Right now I'm asking myself those questions about being CLD.

Let me give you a little history about my spiritual journey. My pilgrim Walk was Walk 31, Table of Mark, in Mankato, in 1997. I have been conference room Lay Director, table leader and assistant table leader several times and have worked agape many times. In addition to conference room tasks I have sponsored many pilgrims. One of my passions is to sponsor pilgrims because I have seen Emmaus change people's lives in positive ways, including mine.

One of the messages given during the Walk is that Emmaus helps pilgrims to return to their home churches and become lay leaders. I believe Emmaus has prepared me and given me confidence to become a lay leader in my home church, where I am currently congregation president at Bethlehem Covenant Church in south Minneapolis.

I am in the Tuesday breakfast reunion group. These men have become some of my dearest friends. We have supported each other in many ways through personal and family crises, celebrations of special events, and when we have been on Emmaus teams. We know we have dear friends we can call on when we need support and prayers or when we want to share something special.

I am humbled to have been elected by the Minnesota Walk to Emmaus Board to be the Community Lay Director for 2009. Maybe I even know why I am here

and how I got here. I believe it was part of God's plan for my life. Please pray for us on the Emmaus board, for the pilgrim Walks planned and especially for the teams and pilgrims as they feel Christ's leading.

Lowery J. Smith, Community Lay Director, Minnesota Walk to Emmaus

New Database System

We have converted our Emmaus Pilgrim information into a new web-based system called IMS. (Internet Membership System). This application was developed by a group of Emmaus Pilgrims in Georgia several years ago and our National Emmaus organization now sponsors it. At last, you will have the ability to update your own information as it changes so that you can continue to receive Emmaus information. You will also be able to locate your Emmaus friends who are still active in Emmaus – those in your church, in your reunion group, on your Walk. And, you will be able update your interest in volunteering to work on Emmaus teams or in support areas for the Walks and the Community.

Using an Internet Explorer browser (other browsers, for example, Mozilla FireFox can't be used), go to address: http://mnwte.inetmember.com/default_MNWTE.aspx This system requires that you use the email address we have on file for you to sign in. To get a password, click on the "Forgot Password" button and one will be emailed to you. If it does not come quickly, check your spam mail. Change your password once you have logged in successfully. The system recognizes you by your email address AND your password. If you share an email address with another Emmaus Pilgrim, the first time you log in you will see the info for the first person recognized in the database. Once you change the password for that person and log in again using the old password, the system will bring up the second person. If you have problems logging in, there is a button on the screen to report this. We are monitoring the problem log and will get back to you with the fix.

Do You Sing or Play An Instrument?



Please share your love of God and love of music with MN Emmaus. Every Walk needs either one or two music leaders. A song leader is required, and an accompanist is a valuable addition. Sometimes, one person can do both. Other times, two work together to lead music on a Walk. The music leaders have manuals, song books, and training to guide them. Do you sing or play the guitar, keyboard, piano, or other instrument? Have you ever considered offering up this skill to a team by being music leader on a walk?

When Lay Directors are looking for music leaders – they know who **HAS** led music on a previous walk. What they don't know is who **COULD** lead music on a Walk that has never done it before. If you have already led music and would enjoy doing it again, or have never led but might be interesting in doing it someday – please contact Mary Ann Smith at 612-722-3339, email smith310@umn.edu and let her know about your interest. MN Emmaus has music trainers who will guide you if you wish.

Another time music leaders and instrumentalists are required is for music at the Candlelight dinner, and/or music for the community who come to Candlelight service. If you would like to serve in this way, please contact Bruce Schroeder at 715-962-4687, email bruce346@centurytel.net, to let him know of your interest.

From the Registrar

There are two Walks coming up this spring, as well as two in the fall. If you have candidates for these Walks, please consult the Minnesota Walk to Emmaus Website for registration forms and sponsor information.

Registration forms with deposit or full payments may be completed and mailed to:

Michelle Schober
MN Walk to Emmaus
7001 Ximines Ln N.
Maple Grove, MN 55369-7642

If you have questions, contact Michelle at mschober4597@yahoo.com.



Books Needed for Walks

Please save and donate your "gently-used" books to the Emmaus Community.

We are looking for used books for the book table at the walks. The books should be in good condition and appropriate for the book table for the pilgrims. Devotional books and books by known Christian authors such as Lucado, Yancey, Eldredge, J.Meyer, Beth Moore etc. are good selections. Used bibles of various translations, study books, concordances and commentaries are also needed.

The books will be priced from \$1.00-\$5.00 and the proceeds will be used for scholarships for upcoming pilgrims. No one will be denied a book due to lack of funds.

We did this at the last women's Walk and it was very successful. You can bring the books to the walks, to gatherings, or contact me directly.

I welcome your ideas to make this project even more beneficial for the pilgrims and for Minnesota Walk to Emmaus.

Thank you for your participation.
Darlene Vandermyde, chair
Education Committee



Welcome New Community Members!

The following men and women were pilgrims during the fall Walks. Let's all welcome them to the Minnesota Walk to Emmaus Community.

Walk #83

Dan Bachelor
Steve Bemel
Larry Blum
Leo Dodd
Kevin Frolen
John Lynch
Dale Morrill
Scott Page
Stephen Pogreba
Mike Quinn
Max Richter
Steve Schober
Don Shannon
Tim Skalitzky
Ron Smook
Russ Steele
Fred Vanderwerf

Walk #84

Becky Alvera
Judy Anderson
Sara Bemel
Latita Benjamin
Grace Bergstrom
Janeice Bull

Walk #84 (continued)

Laura Drummond
Barbara Ebert
Nancy Gee
Beverly Hampton
Marcia Heisserer
Beverly Hinseth
Holly Kandeth
Karen Karl
Sharon Larson
Tammy Malcolm
Tracy Morrill
Janice Paulsen
JoAnn Quam
Dena Quinn
Norma Read
Carolyn Reinecke
Bette Ruskanen
Donna Saied
Paula Sanders
Shirley Saue
Maxene Schwanke
Ann Shephard
Corinne Skalitzky
Diane Sonstegard
Shirley Steele
Cindy Yankovec.

Your 2009 Board of Directors

Lowery J Smith	Community Lay Director	612-722-3339	lowery@ag-line.com
Audrey Benjamin	Community Spiritual Director	651-698-3034	grandma_b@msn.com
Barb McKewin	Clergy	320-289-1491	bjmckewin@prodigy.net
Rick Phillips	Past Community Lay Director/ Gatherings/Reunion Groups	507-289-3466	rphill4525@bismark.com
Wayne Tomlinson	Secretary	763-755-8366	waynetom1@yahoo.com
Ralph Carter	Treasurer	952-935-2693	cart0077@yahoo.com
Don Shannon	Treasurer /Marketing	763-783-5898	donaldshannon1955@yahoo.com
Darlene Vandermyde	Education/Sponsorship	612-781-9839	d_vandermyde@yahoo.com
Julie Ufkes	Agape	320-833-9915	jul-s@mchsi.com
Michelle Schober	Registrar	763-425-0794	mschober4597@yahoo.com
Don Putzier	Communications	507-345-1553	drdcp@hickorytech.net
Jack Uebler	Facilities	651-731-0440	jamar4441@aol.com
Mary Ann Smith	Team Selection	612-722-3339	smith310@umn.edu
Molly Reko	Nominations/Followup	651-454-2208	mollyreko@comcast.net
Bruce Schroeder	Music/Worship	715-962-4687	bruce346@centurytel.net

A Few Words from Our Community Spiritual Director

Recently I have been reminded again that life is about learning and teaching.

We go to School, Church, Bible study, and we live life. We spend years learning and we learn and learn and learn. Sometimes there are lessons in life we didn't even want to learn! I know this for sure as I continue to recover from an extended bout with shingles.

And then there is the flip side to learning. We are to use the lessons from life, and the learning from perhaps years of attending Bible Study and Study groups. How easy it is to forget there is a reason we have learned—and that is we are to teach or be a role model for others. We are to live out our learning. Both learning and teaching are important, however we often stick with our preference! We get stuck in learning and forget we are also teachers. Where, when, and how we are called to teach is about response.

As followers of Jesus Christ we are all grateful Jesus' disciples didn't get caught in the learning cycle and skip the Great Commission of Matthew 28:19a "Therefore **GO** and make disciples of all nations."

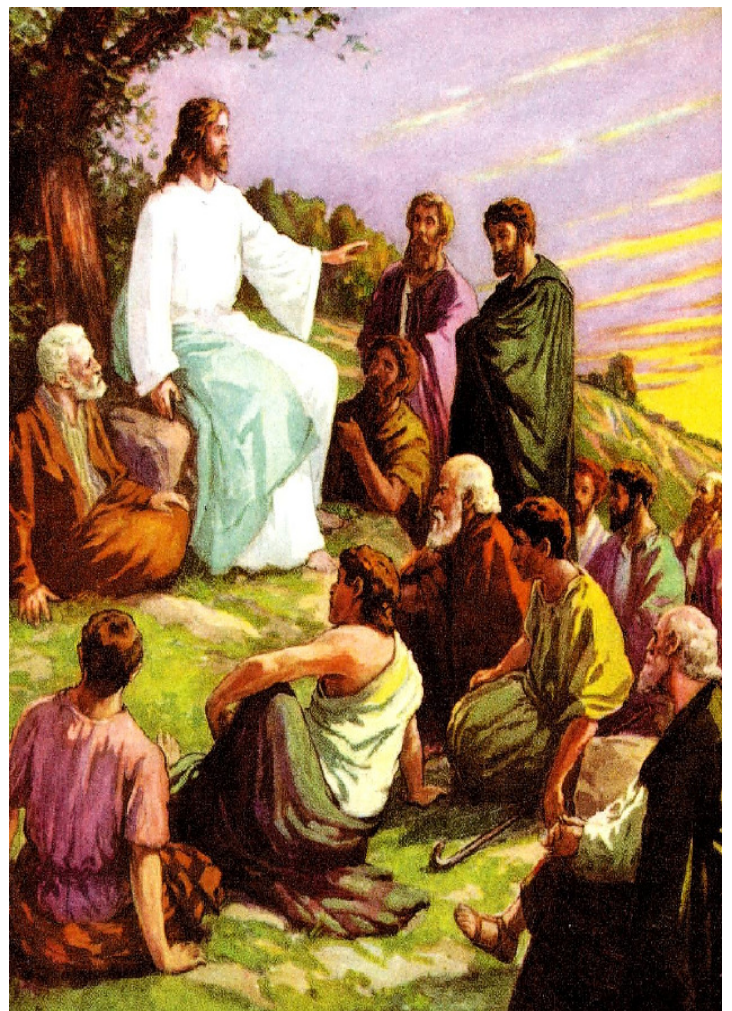
Perhaps you are being asked to enter a teaching phase of discipleship through Emmaus by serving on a team. Maybe you are being asked to seek discernment on whom you might sponsor in an upcoming walk.

I have learned from my bout with shingles the importance of patience—both with myself and others. Now I need to apply my experience of learning patience as I disciple others.

Continue to learn! Make sure you are applying your learning from your Emmaus walk experience, to the teaching and seeking new disciples.

In Christ DeColores

Rev Audrey D Benjamin
Community Spiritual Director
Minnesota Walk to Emmaus



***Therefore go and make disciples of
all nations . . .***

—Matthew 28:19a

Meet some of your Minnesota Walk to Emmaus Board Members

Don Shannon (Marketing/Treasurer), owner of Don's Accounting & Tax Services, Inc. has over 30 years experience in doing accounting and income tax preparation. He attends school each year to stay current on tax law changes. Don is also a professional consultant for QuickBooks accounting software. He specializes in QuickBooks Training, Income Tax Preparation and Small Business Accounting. Don's offers long-term, close relationships with his clients; most clients have been with Don for more than ten years. He offers consultations and seminars for aspiring entrepreneurs. Don is active in many community organizations where he puts his extensive accounting and management knowledge to good use helping others. Don has three sons who live in the Twin Cities area. Don lives in Blaine and is an active member of Blaine United Methodist Church.



John (Jack) Uebler, (Facilities Director), was born in Streator, Illinois, has lived in Arizona, and now resides in Woodbury, MN. He is married to Marna and has a blended family of four children and five grandchildren. He is a member of Woodbury Lutheran Church.

He earned degrees in education and school administration. He was an elementary school teacher, a manufacturing representative for a packaging machinery company in Illinois, and vice-president and sales representative for Technical Packaging Machinery in Chaska until he retired in 1996.

He was a pilgrim on Arizona Walk #78 in 1996, and has been on various Cursillo and Emmaus teams, and has been active in Arizona Reunion Groups and gatherings.

Don Putzier, (Communications Director), was born in Boulder, CO, and presently lives in Mankato with his wife Stephanie, son Eddie, age 16, and daughter Leslie, age 14. He is a member of Hilltop United Methodist Church.

He was a pilgrim on Minnesota Walk #39 in 2000, and has served on various Emmaus conference room and Agape teams, is a past Lay Director, and a member of a men's weekly reunion group in Mankato.

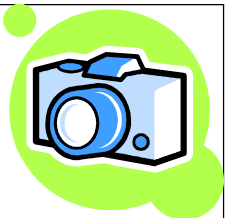
Don and his wife are physicians and have been practicing at the Mankato Clinic for the past 16 years.

Michelle Schober, (Registrar), was a pilgrim on Walk #80 and Music Lead on Walk #82; and will be serving on the Agape team for Walk #86. She grew up in Dallas City, IL. She went to college at MacMurray College in Jacksonville, IL and received her degree in Computer Science and Business. She moved to Minnesota in 1994 to take a job with Carlson Marketing Group, where she worked for 12 years. She decided to resign her position to stay home with her children.

She currently lives in Maple Grove with her husband Steve and their two children John and Ashley. She enjoys being involved in the Walk to Emmaus community. She works part-time for her church, Cross Winds United Methodist, and volunteers at her children's schools.

Wayne Tomlinson (Secretary), was a pilgrim on Walk #35 at Wisconsin Whispering Pines and attends Blaine United Methodist Church. He was born in Rush City, MN, and currently lives in Coon Rapids. He is currently unemployed, but is looking forward to an interesting and fruitful three years serving on the Minnesota Walk to Emmaus Board.

Photos are needed for archives!



Archives of the Minnesota Walk to Emmaus community are being put together, including photos of past Walks. We are missing photos from the following Walks:

1, 8-14, 16, 19, 21-23, 25-26, 44, 47, 52, 55, 56, 59, 60, 62, 64-70, 72-76, 78, 80, and 82. If you have photos (preferably with the captions/rosters), please scan them and forward the files to Don Putzier at drdcp@hickorytech.net

Minnesota Walk to Emmaus
Don Putzier
Communications Director
160 Country Club Drive
Mankato, MN 56001

Non-Profit Org.
US Postage
PAID
Permit #1196
Minneapolis, MN

Minnesota Walk to Emmaus Upcoming Walks

Men's Walk #85
Apr. 16-19, 2009
Camp Ihduhapi
Loretto, MN

Men's Walk #87
Sept. 24-27, 2009
Koronis Assembly
Grounds
Paynesville, MN

Women's Walk #86
Apr. 30-May 3, 2009
Camp Ihduhapi
Loretto, MN

Women's Walk #88
Oct. 8-11, 2009
Koronis Assembly
Grounds
Paynesville, MN

***Do you want to keep getting
this newsletter by mail?***

*Please contact Don Putzier at drdcp@hickorytech.net
or return a note to him by mail if you would like to
stop receiving this newsletter by US Mail, or if you
wish to be taken off all mailings. The newsletters will
continue to be available on line via our website.*

Support Candlelight and Closing!

We want to see you! Remember the feeling of walking into a chapel full of people singing, "Jesus, Jesus"? The Walk to Emmaus Community will gather before the Saturday evening Candlelight for song, communion, and to lift up the Pilgrims in prayer. You are also welcome to join for closings, which will be Sunday afternoons, at approximately 4:30 p.m.

Map to Camp Ihduhapi
3425 Ihduhapi Rd.
Loretto, MN 55345
(612)-822-CAMP (2267)

